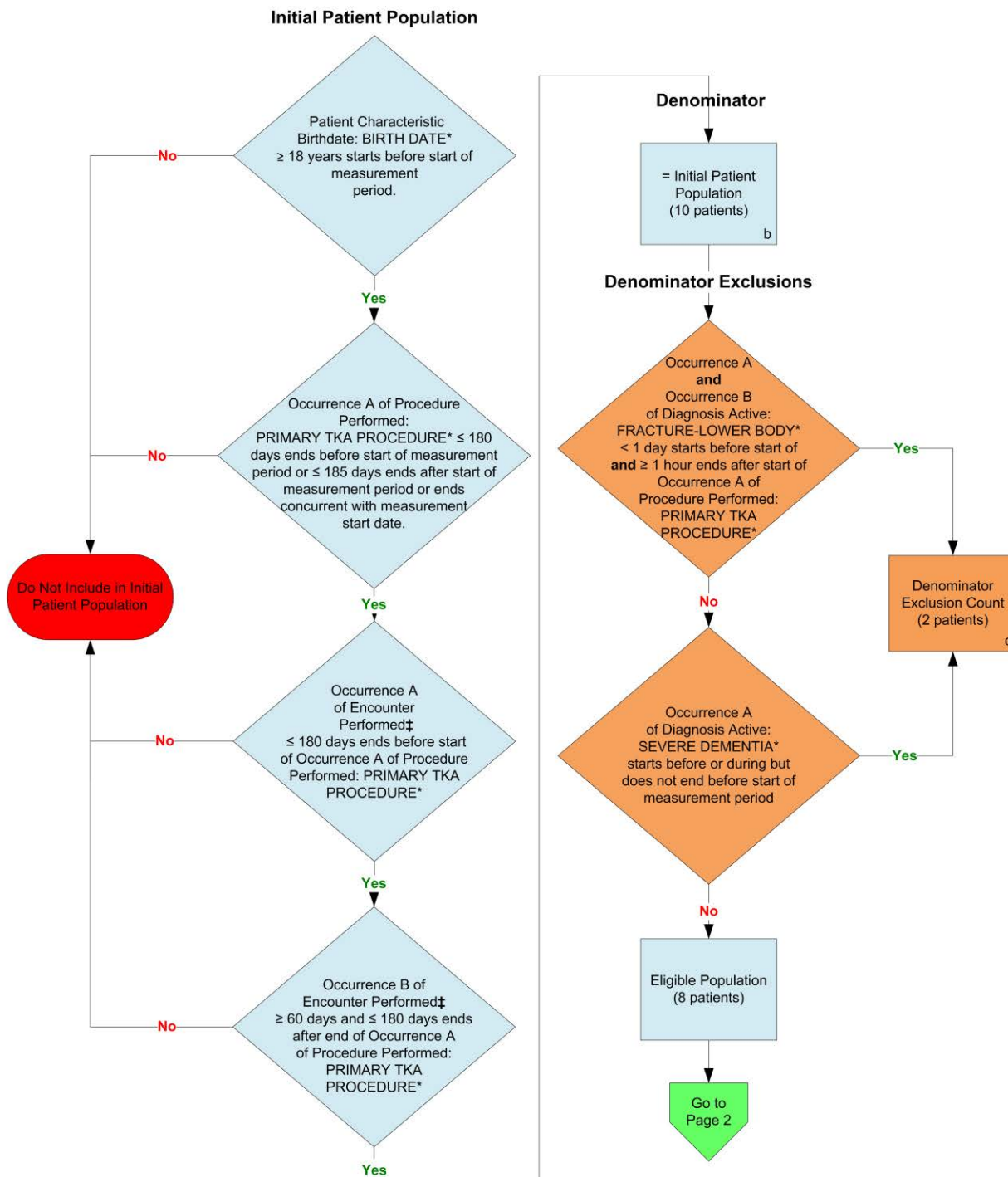
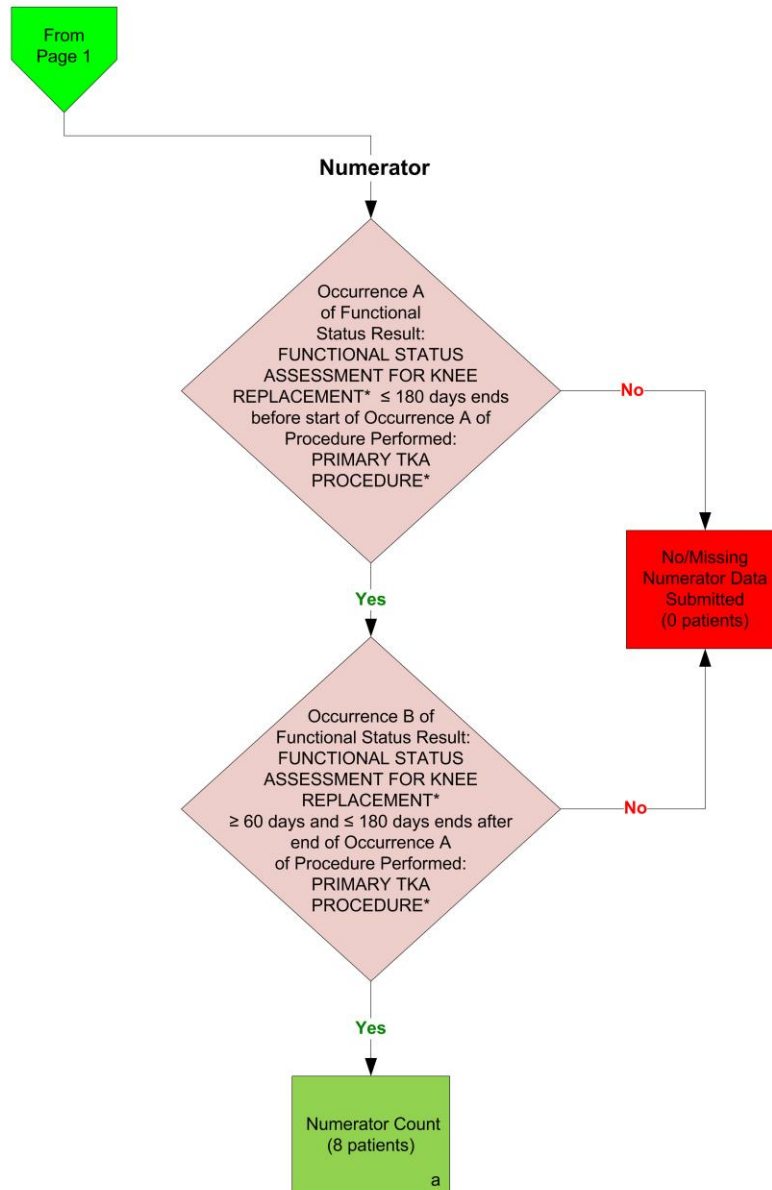


2014 eCQM Flow  
Measure Identifier: CMS66v3  
Functional Status Assessment for Knee Replacement



\*Please refer to the specific section of the eCQM to identify the QDM data elements and associated value sets for use in reporting this eCQM.  
‡For a listing of appropriate encounters, please refer to the QDM data elements and associated value sets as specific data elements have not been listed.

2014 eCQM Flow  
Measure Identifier: CMS66v3  
Functional Status Assessment for Knee Replacement



\*Please refer to the specific section of the eCQM to identify the QDM data elements and associated value sets for use in reporting this eCQM.  
‡For a listing of appropriate encounters, please refer to the QDM data elements and associated value sets as specific data elements have not been listed.

**SAMPLE CALCULATION:**

**Performance Rate =**  

$$\frac{\text{Numerator (a=8 patients)}}{\text{Denominator (b=10 patients) – Denominator Exclusions (c=2 patients) – Denominator Exceptions (N/A)}} = 100.00\%$$

2014 eCQM Flows  
Measure Identifier: CMS66v3  
Functional Status Assessment for Knee Replacement

Please refer to the specific section of the eCQM to identify the QDM data elements and associated value sets for use in reporting this eCQM.

1. Start Initial Patient Population
2. Check Patient Characteristic Birthdate:
  - a. If the QDM data element, BIRTH DATE, is greater than or equal to 18 years of age starts before the start of the measurement period equals No, do not include in Initial Patient Population. Stop Processing.
  - b. If the QDM data element, BIRTH DATE, is greater than or equal to 18 years of age starts before the start of the measurement period, equals Yes, continue processing and proceed to check Procedure Performed.
3. Check Procedure Performed:
  - a. If Occurrence A of QDM data element, PRIMARY TKA PROCEDURE, less than or equal to 180 days ends before start of measurement period OR Occurrence A of QDM data element PRIMARY TKA PROCEDURE, less than or equal to 185 days ends after start of measurement period or ends concurrent with measurement end date equals Yes, include in Initial Patient Population and continue on to Encounter Performed.
  - b. If Occurrence A of QDM data element, PRIMARY TKA PROCEDURE, less than or equal to 180 days ends before start of measurement period OR Occurrence A of QDM data element PRIMARY TKA PROCEDURE, less than or equal to 185 days ends after start of measurement period or ends concurrent with measurement end date equals No, do not include in Initial Patient Population and stop processing.
4. Check Encounter Performed:
  - a. If Occurrence A of the QDM data element, OUTPATIENT CONSULTATION, less than or equal to 180 days ends before start of Occurrence A of PRIMARY TKA PROCEDURE AND Occurrence B of QDM data element OUTPATIENT CONSULTATION greater than or equal to 60 days ends after end of Occurrence A of QDM data element PRIMARY TKA PROCEDURE AND Occurrence B of OUTPATIENT CONSULTATION less than or equal to 180 days ends after end of Occurrence A of PRIMARY TKA PROCEDURE equals Yes, include in the Initial Patient Population and proceed to Denominator.
  - b. If the QDM data element, OUTPATIENT CONSULTATION, less than or equal to 180 days ends before start of Occurrence A of PRIMARY TKA PROCEDURE AND Occurrence B of QDM data element OUTPATIENT CONSULTATION greater than or equal to 60 days ends after end of Occurrence A of QDM data element PRIMARY TKA PROCEDURE AND Occurrence B of OUTPATIENT

CONSULTATION less than or equal to 180 days ends after end of Occurrence A of PRIMARY TKA PROCEDURE equals No, proceed to check next Encounter Performed.

- c. If the QDM data element, FACE-TO-FACE INTERACTION, less than or equal to 180 days ends before start of Occurrence A of PRIMARY TKA PROCEDURE AND Occurrence B of QDM data element FACE-TO-FACE INTERACTION greater than or equal to 60 days ends after end of Occurrence A of QDM data element PRIMARY TKA PROCEDURE AND Occurrence B of FACE-TO-FACE INTERACTION less than or equal to 180 days ends after end of Occurrence A of PRIMARY TKA PROCEDURE equals Yes, include in the Initial Patient Population and proceed to Denominator.
  - d. If the QDM data element, FACE-TO-FACE INTERACTION, less than or equal to 180 days ends before start of Occurrence A of PRIMARY TKA PROCEDURE AND Occurrence B of QDM data element FACE-TO-FACE INTERACTION greater than or equal to 60 days ends after end of Occurrence A of QDM data element PRIMARY TKA PROCEDURE AND Occurrence B of FACE-TO-FACE INTERACTION less than or equal to 180 days ends after end of Occurrence A of PRIMARY TKA PROCEDURE equals No, proceed to check next Encounter Performed.
  - e. If the QDM data element, OFFICE VISIT, less than or equal to 180 days ends before start of Occurrence A of PRIMARY TKA PROCEDURE AND Occurrence B of QDM data element OFFICE VISIT greater than or equal to 60 days ends after end of Occurrence A of QDM data element PRIMARY TKA PROCEDURE AND Occurrence B of OFFICE VISIT less than or equal to 180 days ends after end of Occurrence A of PRIMARY TKA PROCEDURE equals Yes, include in the Initial Patient Population and proceed to Denominator.
  - f. If the QDM data element, OFFICE VISIT, less than or equal to 180 days ends before start of Occurrence A of PRIMARY TKA PROCEDURE AND Occurrence B of QDM data element OFFICE VISIT greater than or equal to 60 days ends after end of Occurrence A of QDM data element PRIMARY TKA PROCEDURE AND Occurrence B of OFFICE VISIT less than or equal to 180 days ends after end of Occurrence A of PRIMARY TKA PROCEDURE equals No, do not include in Initial Patient Population and stop processing.
5. Start Denominator
- a. Denominator equals the Initial Patient Population. Denominator is represented by the letter B in the sample calculation listed at the end of this document. Letter B equals 10 patients in the sample calculation.
6. Start Denominator Exclusions
7. Check Diagnosis Active:
- a. If Occurrence A and Occurrence B of QDM data element FRACTURE – LOWER BODY less than 1 day starts before start of Occurrence A of QDM data element PRIMARY TKA PROCEDURE AND if Occurrence A and Occurrence B of QDM

data element FRACTURE – LOWER BODY greater than or equal to 1 hour ends after start of Occurrence A of QDM data element PRIMARY TKA PROCEDURE equals Yes, include in Denominator Exclusion count. Denominator Exclusion is represented by letter C in the sample calculation listed at the end of this document. Letter C equals 2 patients in the sample calculation.

- b. If Occurrence A and Occurrence B of QDM data element FRACTURE – LOWER BODY less than 1 day starts before start of Occurrence A of QDM data element PRIMARY TKA PROCEDURE AND if Occurrence A and Occurrence B of QDM data element FRACTURE – LOWER BODY greater than or equal to 1 hour ends after start of Occurrence A of QDM data element PRIMARY TKA PROCEDURE equals No, proceed to check next Diagnosis Active.
- c. If Occurrence A of QDM data element SEVERE DEMENTIA starts before or during but does not end before start of measurement period equals Yes, include in Denominator Exclusion count. Denominator Exclusion is represented by letter C in the sample calculation listed at the end of this document. Letter C equals 2 patients in the sample calculation.
- d. If Occurrence A of QDM data element SEVERE DEMENTIA starts before or during but does not end before start of measurement period equals No, proceed to Numerator.

#### 8. Start Numerator

#### 9. Check Functional Status Result:

- a. If Occurrence A of QDM data element FUNCTIONAL STATUS ASSESSMENT FOR KNEE REPLACEMENT less than or equal to 180 days ends before start of Occurrence A of QDM data element PRIMARY TKA PROCEDURE AND Occurrence B of QDM data element FUNCTIONAL STATUS ASSESSMENT FOR KNEE REPLACEMENT greater than or equal to 60 days ends after end of Occurrence A of QDM data element PRIMARY TKA PROCEDURE AND Occurrence B of QDM data element FUNCTIONAL STATUS ASSESSMENT FOR KNEE REPLACEMENT less than or equal to 180 days ends after end of Occurrence A of QDM data element PRIMARY TKA PROCEDURE equals Yes, include in Numerator count. Numerator is represented by letter A in the sample calculation listed at the end of this document. Letter A equals 8 patients in the sample calculation.
- b. If QDM data element FUNCTIONAL STATUS ASSESSMENT FOR KNEE REPLACEMENT less than or equal to 180 days ends before start of Occurrence A of QDM data element PRIMARY TKA PROCEDURE AND Occurrence B of QDM data element FUNCTIONAL STATUS ASSESSMENT FOR KNEE REPLACEMENT greater than or equal to 60 days ends after end of Occurrence A of QDM data element PRIMARY TKA PROCEDURE AND Occurrence B of QDM data element FUNCTIONAL STATUS ASSESSMENT FOR KNEE REPLACEMENT less than or equal to 180 days ends after end of Occurrence A of QDM data element PRIMARY TKA PROCEDURE equals No, include in the No/Missing Numerator Data Submitted count and stop processing.

**SAMPLE CALCULATION:**

**Performance Rate =**

Numerator (a=8 patients)

÷

Denominator (b=10 patients) – Denominator Exclusions (c=2 patients) – *Denominator Exceptions (N/A)*

**= 100.00%**